

PONCA



BROADBAND

**Ashland Fiber Network**      **Ashland, OR**  
purchase by private telecom for \$1.00

**Burlington Telecom**      **Burlington, VT**  
sold for pennies on the dollar

**ChaskaNet**      **Chaska, MN**  
closed to stop the blood flow of money

**Crosslake Comm**      **Crosslake, MN**  
sold to a private company at a loss

**FiberNet**      **Marietta, GA**  
sold at a \$24M loss

**iProvo**      **Provo, UT**  
they actually PAID Google to take it over

**Lake Connections**      **Lake County, MN**  
sold to a private company at a loss

**Link City**      **Kansas City, MO**  
sold to a private company, then leased  
it back from them

**Memphis Networx**      **Memphis, TN**  
sold at a \$29M loss

**Net Quincy**      **Quincy, FL**  
sold for pennies on the dollar

**OptiNet**      **Bristol, VA**  
closed following federal indictments

**Thames Valley Comm**      **Groton, CN**  
sold at a \$34M loss

**Westfield Connects**      **Hamilton, IN**  
sold at a 75% loss



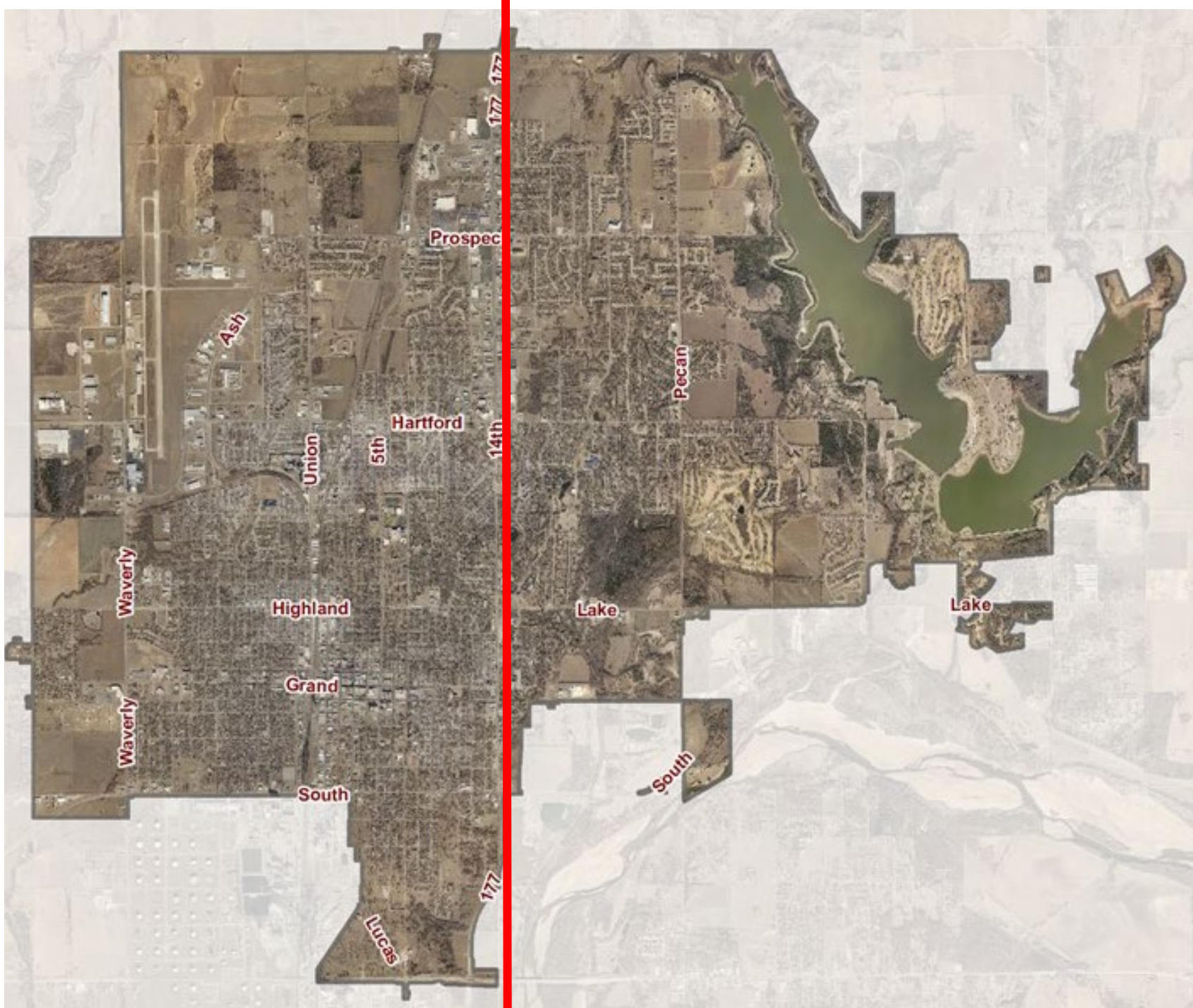


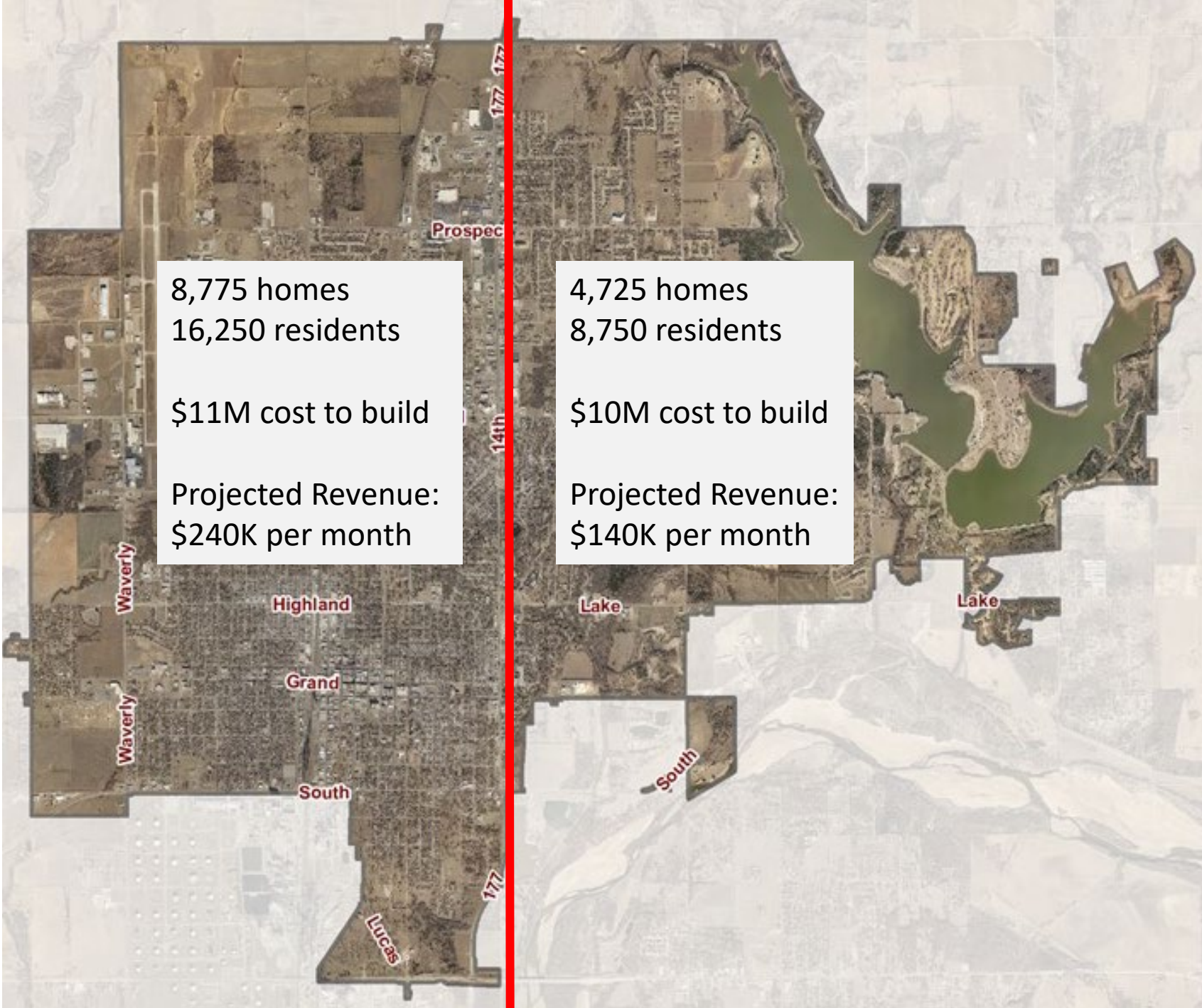


Housing density = Number of homes per square mile

Cost per home passed = Total cost to build, divided by number of homes

Take rate = Projected number of subscribers

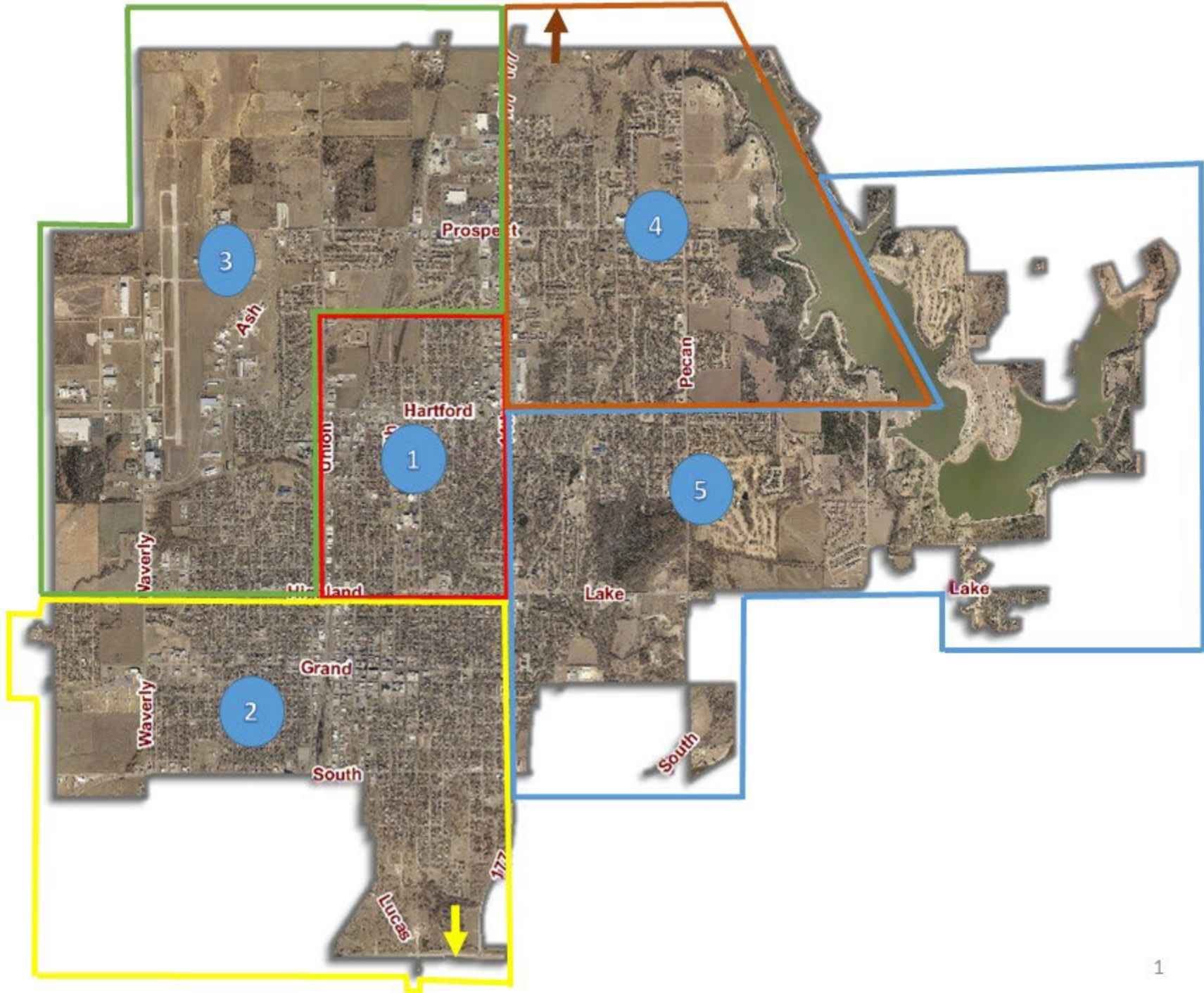




8,775 homes  
16,250 residents  
  
\$11M cost to build  
  
Projected Revenue:  
\$240K per month

4,725 homes  
8,750 residents  
  
\$10M cost to build  
  
Projected Revenue:  
\$140K per month







# Out-sourcing

Outside plant construction

In-home installations

24x7 helpdesk

Network Engineering and

Alarm Monitoring

????

## How many people are needed

????

How many helpdesk positions are needed

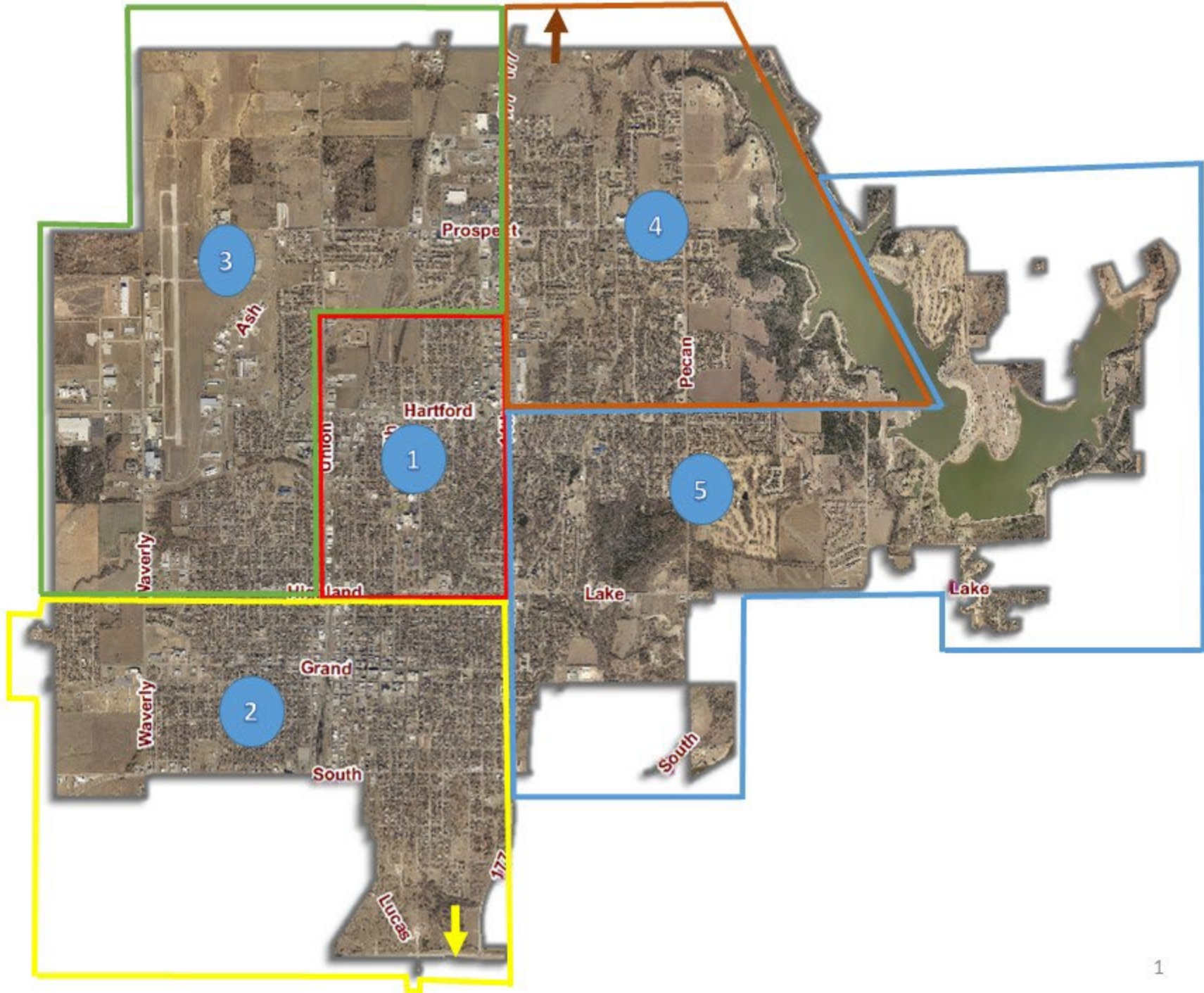
Is a 24x7 helpdesk actually necessary

How many field technicians are needed

How many central office technicians are needed

How large should the management structure be

Are clerical and support staff needed



PONCA



BROADBAND